

9415 xy micro imager (XMI)™

Why Century?

Century is bringing sophisticated oil field technology to the shallow oil sands market at an affordable price.

Century's 9415 xy micro imager (XMI)™ is a Geological and Reservoir Characterization tool which provides:

- Significantly improved accuracy of dip azimuth
- Image data for improved depth correlation of core
- Image data providing valuable structural and reservoir information through lost core intervals
- Provides higher resolution data at the same logging speeds as a conventional dipmeter
- Significantly more information at minimal cost increase over traditional dipmeters

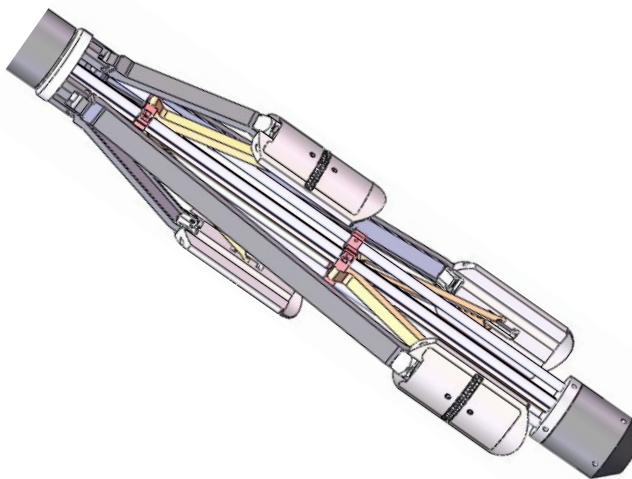
High resolution oriented microresistivity formation images, dipmeter computation, gamma ray and excellent borehole coverage are generated electronically— these images are less effected by borehole rugosity, washouts and mud density.

Applications include:

- Structural Geology (Faults, fractures, conglomerates)
- Sedimentary Features
- Rock Texture
- Complement/Substitution of Cores
- Geomechanical Reservoir Analysis (Drilling induced features)
- 3D Reservoir Modeling
- Borehole Geometry

Features:

- Gamma Ray
- X-Y Caliper
- Image Data generated from 144 microresistivity measurements distributed over 4 pads
- Digital Data recording



United States

Australia

Canada

India

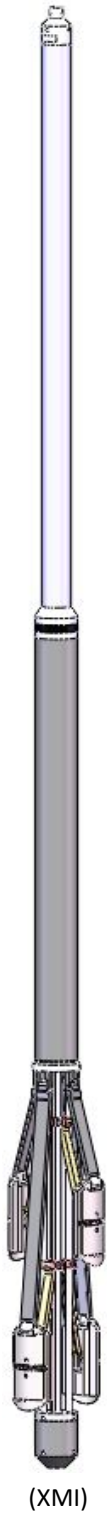
www.centurywirelineservices.com

Asia

South America

Africa

9415 xy micro imager (XMI)™



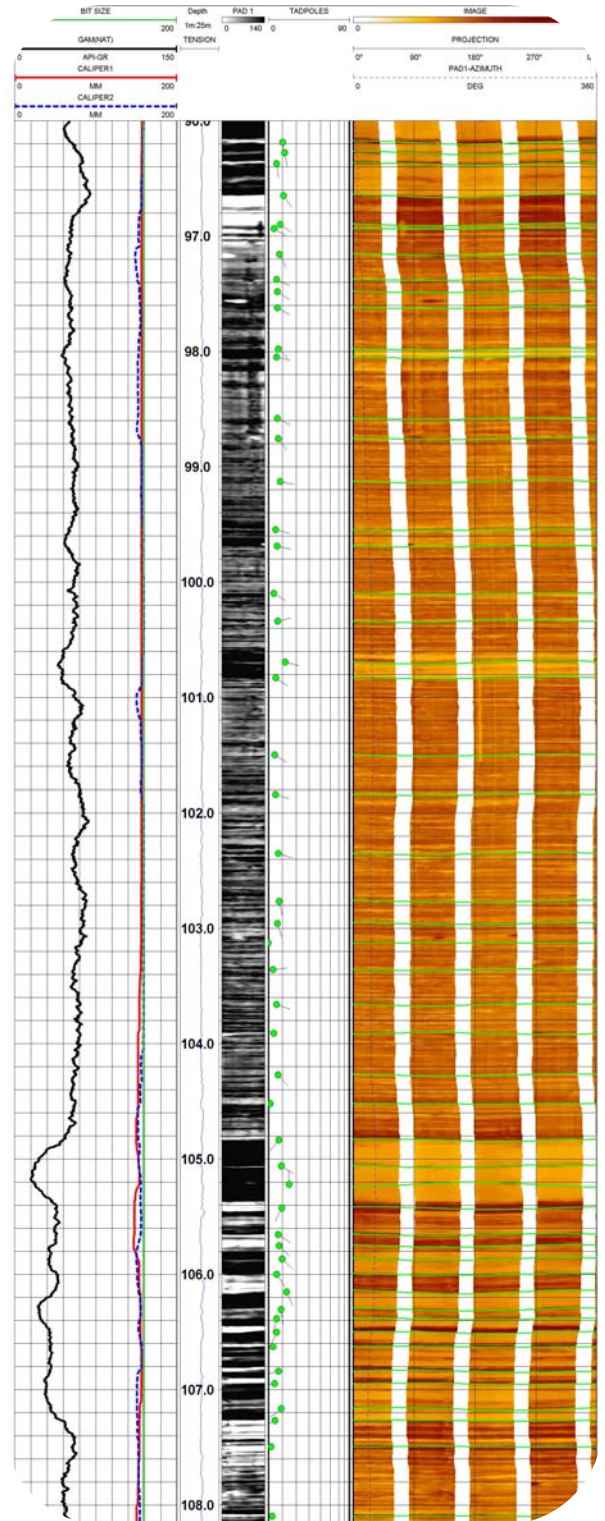
(XMI)

Century Wireline Services offers a full line of open hole logging services to meet any customer needs.

Century's core business philosophy is to provide quality logging technology and services at a prices affordable to the shallow (<10,000 ft.) oil & gas markets. Its instrument division, Century Geophysical, is the designer and manufacturer of the 9415 xy micro imager (XMI)™ and acquisition software. From Century's state of the art engineering and manufacturing complex in Tulsa, Oklahoma, Century Wireline Services has direct access to the technology and support critical to providing the professional quality logging services required in the oil & gas markets where Century operates. Century's Tulsa complex includes multi diameter test wells that are available for tool testing and training of new engineers. Facilities are also available to test new and repaired tools to the limits of their operating specifications.

9415 xy micro imager (XMI)™

Length:	4.29 m	14.07 ft
Temperature:	125 °C	257 °F
Diameter:	109.47 mm	4.31 in.
Weight:	74.84 kg	165 lbs.
Pressure:	351 kg/cm2	5,000 psi
Min. Borehole Dia.:	127 mm	5 in.
Max. Borehole Dia.:	312.67 mm	12.31 in.
Vertical Resolution:	3 mm @ 216 m/hr 5 mm @ 350 m/hr	
Azimuthal Resolution:	2.54 mm	0.1in.
Measuring Electrodes:	144	(36 buttons per pad)
Accuracy:	GR +/- 5% ; X-Y Caliper +/- 0.2" Deviation +/- 0.5° Azimuth +/- 2°	
Borehole Diameter Coverage %	5.0"	91.7%
	5.5"	83.3%
	6.0"	76.4%
	6.5"	70.5%
	7.0"	65.5%



Large enough to meet your service needs...

small enough to care.